



LAMINATE
ALMOST ANYTHING
UP TO 10X FASTER
WITH AS MUCH AS
50% LESS COST



(800) 433-0730
hmtmfg.com

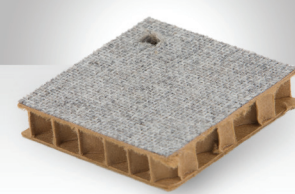
LAMINATE ^{UP TO} 10X FASTER, ^{UP TO} 50% LESS COST



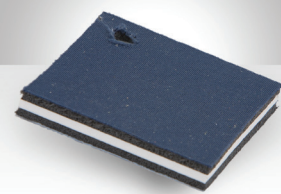
Vertical Grade Laminate bonded to Particleboard



Carpet bonded to Marine Grade Plywood



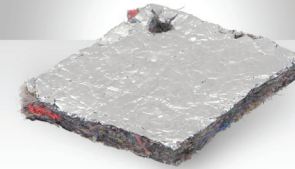
Burlap Fabric bonded to Cardboard Honeycomb



Fabric bonded to Rubber bonded to PVC Board



Scrub Pad bonded to Sponge



Acoustic Insulation Felt bonded to Aluminum Foil



Fiberglass Scrim bonded to Ceramic Foam



Luan bonded to Polyethylene Honeycomb



Pinboard Fabric bonded to Wheatboard bonded to Cork

ORIGINAL



PLUS



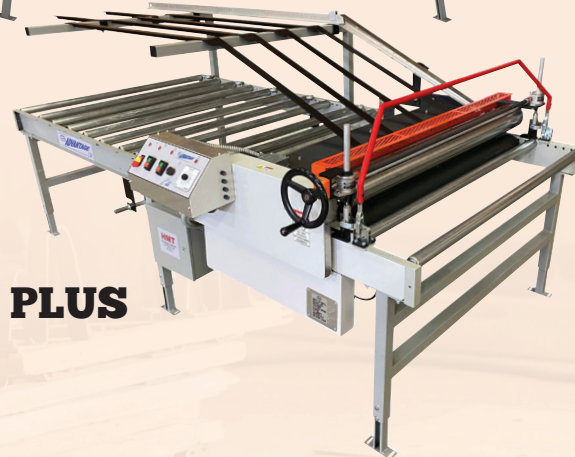
SIGNATURE



ELITE



ELITE PLUS



OUTPUT WIDTH up to 49" (124 cm)
OUTPUT LENGTH unlimited
OUTPUT THICKNESS up to 2" (5 cm)
ROLLER HEIGHT ADJUSTMENT two-wheel
DIGITAL HEIGHT INDICATOR no
PRODUCTION SPEED 6-8 feet per minute
WORKS WITH flat sheets or roll stock
IDEAL FOR all laminates including high-gloss finishes
ROLLER MATERIAL easy to clean, durable, chrome plated steel
ROLL STOCK FEED ATTACHMENT available option (see back page)
HOT KNIFE ADHESIVE CUTTER available option (see back page)
INFEED & OUTFEED CONVEYORS available option (see back page)
MACHINE WIDTH 71" (181 cm)
MACHINE LENGTH 120" (305 cm)
MACHINE HEIGHT 55" (140 cm)
WEIGHT 1300 lb (560 kg)
HEATBANK 9 kW
VOLTAGE 208 or 230 single phase
AMPS 43 amp draw + 1.5 cutoff

ORIGINAL
 up to 49" (124 cm)
 unlimited
 up to 2" (5 cm)
 two-wheel
 no
 6-8 feet per minute
 flat sheets or roll stock
 all laminates including high-gloss finishes
 easy to clean, durable, chrome plated steel
 available option (see back page)
 available option (see back page)
 available option (see back page)
 71" (181 cm)
 120" (305 cm)
 55" (140 cm)
 1300 lb (560 kg)
 9 kW
 208 or 230 single phase
 43 amp draw + 1.5 cutoff

ELITE
 up to 49" (124 cm)
 unlimited
 up to 4" (10 cm)
 single wheel
 included
 6-8 feet per minute
 flat sheets or roll stock
 all laminates including high-gloss finishes
 easy to clean, durable, chrome plated steel
 available option (see back page)
 available option (see back page)
 available option (see back page)
 71" (181 cm)
 120" (305 cm)
 55" (140 cm)
 1300 lb (560 kg)
 9 kW
 208 or 230 single phase
 43 amp draw + 1.5 cutoff

PLUS
 up to 61" (155 cm)
 unlimited
 up to 2" (5 cm)
 two-wheel
 no
 6-8 feet per minute
 flat sheets or roll stock
 all laminates including high-gloss finishes
 easy to clean, durable, chrome plated steel
 available option (see back page)
 available option (see back page)
 available option (see back page)
 83" (211 cm)
 120" (305 cm)
 55" (140 cm)
 1400 lb (635 kg)
 10.5 kW (208v) or 11 kW (230v)
 208 or 230 single phase **
 60 amp draw + 2 cutoff

ELITE PLUS
 up to 61" (155 cm)
 unlimited
 up to 4" (10 cm)
 single wheel
 included
 6-8 feet per minute
 flat sheets or roll stock
 all laminates including high-gloss finishes
 easy to clean, durable, chrome plated steel
 available option (see back page)
 available option (see back page)
 available option (see back page)
 83" (211 cm)
 120" (305 cm)
 55" (140 cm)
 1400 lb (635 kg)
 10.5 kW (208v) or 11 kW (230v)
 208 or 230 single phase **
 60 amp draw + 2 cutoff

SIGNATURE
 up to 61" (155 cm)
 unlimited
 up to 4" (10 cm)
 single wheel
 included
 8-12 feet per minute
 flat sheets or roll stock
 all laminates including high-gloss finishes
 easy to clean, durable, chrome plated steel
 available option (see back page)
 available option (see back page)
 available option (see back page)
 83" (211 cm)
 180" (457 cm)
 55" (140 cm)
 1536" (697 kg)
 15 kW
 208 or 230 three phase
 45 amp draw + 2 cutoff

** optional three phase upgrade



**NO MORE WAITING FOR GLUE TO DRY.
 NO MORE CLEAN UP.
 NO MORE UNEVEN APPLICATIONS.**

HMT's Advantage Laminating System can glue virtually anything: wood, laminates, veneers, metal, paper, foam, cork, fabric, plastics, rubber, paper, foils, fiberglass, leather, gypsum, natural products, and carpet. Sheet or roll stock. Unlimited lengths, from 2" o 61" wide.

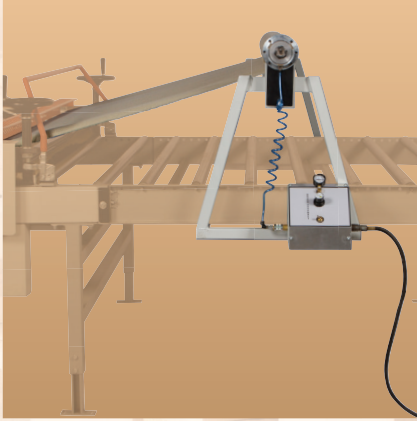
Simply place our high performance hot melt adhesive film over your substrate, load your laminate material, and let the machine do the work. Infrared heat melts the adhesive film moments before bonding your laminate and substrate. Rollers apply even pressure, providing a reliable, strong bond. You'll be able to handle, cut, drill, and fabricate the laminated output immediately. Zero cure time required!

By letting you laminate almost anything up to 10 times faster, with up to 50% less cost, the Advantage Laminating System can put more money in your pocket.

Seeing is believing. Let us run samples of your material through the Advantage Laminating System. You'll be able to inspect the bond quality, feel the finished product, and see for yourself why HMT's Advantage Laminating System could be the smartest investment you make.

see demo video & pricing at
hmtmfg.com

ROLL STOCK FEED ATTACHMENT



The optional roll stock feed attachment allows users to easily feed rolled stock laminate material (such as melamine, gator ply, fabric, etc). The unit is fitted with 3" (7.6 cm) core chucks and an air clutch which supplies consistent tension across the pay out bar.

HOT KNIFE ADHESIVE CUTTER



The optional hot knife adhesive cutter is a heated arm that reaches across the width of your laminator. The operator won't need to bend over the panel to cut adhesive. Instead, a quick flick of the wrist pushes the arm through the adhesive, making a fast and clean cut.

INFEED & OUTFEED CONVEYORS



These conveyors extend the length of the machine, making it easier to handle full size panels. Your laminating machines can be fitted with additional conveyor sections as needed. Conveyor sections are available in 5' (152 cm) lengths and can be ordered with or without legs.

AMERICAN MADE WITH RENEWABLE ENERGY

Our machines and adhesives are manufactured and assembled in the USA. Our facility is powered by solar panels and a wind turbine.



EASY INSTALLATION

Customers can easily install their Advantage Laminating System. Each Laminator includes an installation DVD loaded with step-by-step setup instructions. And, free technical support is a phone call away at (800) 433-0730.

ADHESIVE SPECIFICATIONS

HMT's Advantage hot melt adhesive film is shipped in 500' rolls cut to any width up to 65 inches. It is 6-7 mil in raw form and 2-3 mil thick when applied, melted, and compressed. Our fusible webs feature heavy film thickness (7.5 to 8.0 grams/sf), a unique non-shrink web design, and non solubility.

NO MESS, NO WAIT

Advantage systems are easy to use and produce ready-to-use laminated output. No waiting for drying. No messy white glue, sprays, or contact cement. No dripping, no overspray. No clean up required!

THE ADHESIVE AUTHORITY SINCE 1972

HMT Manufacturing has been solving adhesive challenges since 1972. Our products are found in the world's largest retailers, mom-and-pop woodworking shops, and mid-sized manufacturing facilities worldwide. Simply put, HMT can help you adhere anything. We invented a hot melt adhesive film that is non-toxic, non-shrinking, and high performance. We also developed laminating equipment that helps companies decrease costs, improve quality, and increase efficiency. And, we build custom laminating equipment and solutions on demand.

22-07



HMT

(800) 433-0730 or (847) 473-2310
sales@hmtmfg.com
hmtmfg.com